



Stationary Oil Filtration Systems K2-1 and K5-1

The K2-1 and K5-1 stationary oil filtration systems from Kaydon Filtration provides versatility in oil filtration with its rugged and compact design. Equipment protection from contaminated oil is supplied in a continuous duty K2-1 or K5-1 oil filtration system. Kaydon Filtration Kaymax™ technology element is offered for particulate removal, and if water removal is desired, a KQD Quick-Dry™ element is available.

The K2-1 and K5-1 oil filtration systems support long-term equipment operation and significantly reduces the probability of oil related failures or unscheduled maintenance due to contaminated oil. The K2-1 and K5-1 helps reduce mechanical failures, equipment unavailability, and maintenance costs due to contaminated oil.



K2-1 and K5-1 provide these benefits:

- o MAXIMIZES UPTIME and EXTENDS COMPONENT LIFE
- o PROTECTS COMPONENTS AND INCREASES OIL LIFE

OPTIONS		
Description	Description	
460 VAC / 3 PH / 60 Hz	380 VAC / 3 PH / 50 Hz	By-Pass Valve (15, 25, or 40 PSID)
Explosion Proof	Export Crafting	
Inlet/Outlet Sample Ports	Inlet/Outlet Hoses (10 feet each)	"y" Type Strainer

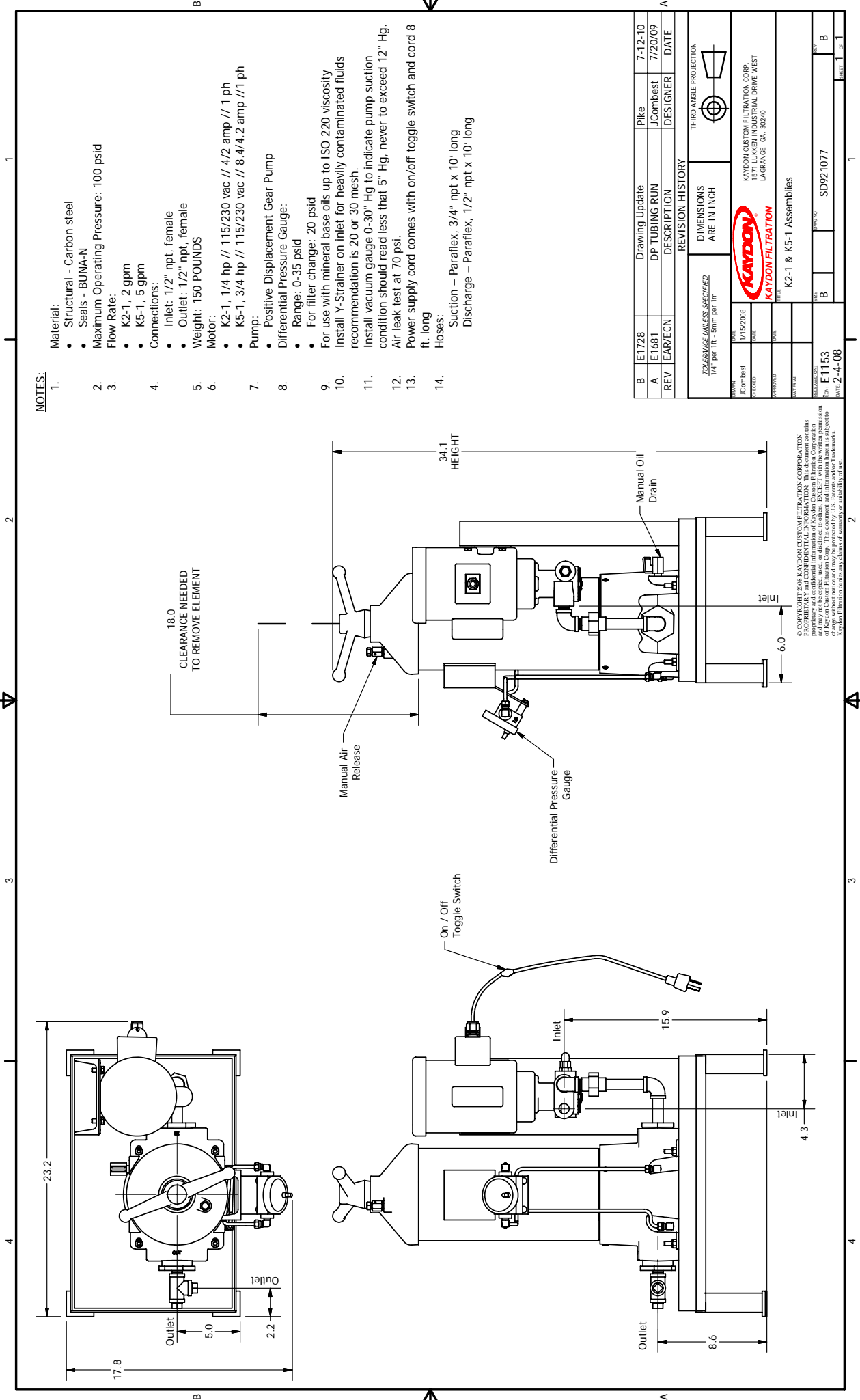
FOOTNOTES

- (1) As measured with inline automatic particle monitor calibrated to ISO 11171 and influent no greater than ISO 22/19/17
 (2) Removes 99.9% of all particles 5.1 micron ($\beta_{5.1(c)}=1000$) and larger (tested per ISO 16889)
 (3) Removes 99.9% of all particles 7.1 micron ($\beta_{7.1(c)}=1000$) and larger (tested per ISO 16889)
 (4) Removes 99.9% of all particles 11.3 micron ($\beta_{11.3(c)}=1000$) and larger (tested per ISO 16889)
 (5) Removes 99.9% of all particles 17.5 micron ($\beta_{17.5(c)}=1000$) and larger (tested per ISO 16889)
 (6) Required for element changes.
 DS060509KPX-1

SPECIFICATIONS & DETAILS	
System Flow	K2-1: 2 GPM / 8 LPM (maximum flow) K5-1: 5 GPM / 19 LPM (maximum flow)
Sizing	Up to 500 Gallons / 1,900 Liters
System Pressure	100 PSIG / 7 BAR (maximum)
Environmental Parameters	NEMA 4 / IP54 Minimum Temperature: 32 F (0 C) Maximum Temperature: 104 F (40 C)
Operating Voltage	K2-1: 120 VAC / 1 PH / 60 Hz / 7.6 AMPS K5-1: 120 VAC / 1 PH / 60Hz / 13.8 AMPS
Materials of Construction	Metals: Carbon Steel, Bronze, Stainless Steel Elastomers: Buna-N Paint: Acrylic Urethane Enamel
Pressure Vessels	Carbon Steel
Inlet/Outlet Connections	Type: NPT (female) Inlet: 1/2 inch Outlet: 1/2 inch
Pump/Motor Assembly	Pump Type: Gear - positive displacement Motor: K2-1 = .25 HP (.19 KW) K5-1 = .75 HP (.56 KW) Motor includes power cord and ON/OFF switch
Fluid Compatibility	Mineral Base Oils up to ISO 220 Viscosity
Performance	Less than 18/16/13 ⁽¹⁾ ISO Cleanliness Code NOTE: Vessel is pre-installed with A910244 element
Weight	150 lbs (68 Kgs) approximate
Dimensions	23 inches L x 18 inches W x 35 inches H (584 mm L x 457 mm W x 889 mm H)

CONSUMABLES		
DESCRIPTION	QTY	PART NUMBER
5 MICRON FILTER ELEMENT ⁽²⁾	1	A910199
7 MICRON FILTER ELEMENT ⁽³⁾	1	A910106
11 MICRON FILTER ELEMENT ⁽⁴⁾	1	A910244
17 MICRON FILTER ELEMENT ⁽⁵⁾	1	A910096
WATER ABSORBING ELEMENT (14 MICRON)	1	A910393
FILTER VESSEL SEAL ⁽⁶⁾	1	54M99

1571 Lukken Industrial Drive West • LaGrange, GA 30240
 International 00+1 706.884.3041 • Toll Free 1.800.241.2342 (U.S. Only)
 Fax 706.884.3835 • www.kaydonfiltration.com • filtration@kaydon.com



NOTES:

1. Material:
 - Structural - Carbon steel
 - Seals - Buna-N
2. Maximum Operating Pressure: 100 psid
3. Flow Rate:
 - K2-1, 2 gpm
 - K5-1, 5 gpm
4. Connections:
 - Inlet: 1/2" npt, female
 - Outlet: 1/2" npt, female
5. Weight: 150 POUNDS
6. Motor:
 - K2-1, 1/4 hp // 115/230 vac // 4/2 amp // 1 ph
 - K5-1, 3/4 hp // 115/230 vac // 8.4/4.2 amp // 1 ph
7. Pump:
 - Positive Displacement Gear Pump
8. Differential Pressure Gauge:
 - Range: 0-35 psid
 - For filter change: 20 psid
9. For use with mineral base oils up to ISO 220 viscosity
10. Install Y-Strainer on inlet for heavily contaminated fluids
11. recommendation is 20 or 30 mesh.
12. Install vacuum gauge 0-30" Hg to indicate pump suction condition should read less than 5" Hg, never to exceed 12" Hg.
13. Air leak test at 70 psi.
14. Power supply cord comes with on/off toggle switch and cord 8 ft. long

Hoses: Suction - Paraflex, 3/4" npt x 10' long
 Discharge - Paraflex, 1/2" npt x 10' long

B	ET1728	Drawing Update	Pike	7-12-10
A	ET1681	DP TUBING RUN	JCombest	7/20/09
REV	EAR/ECN	DESCRIPTION	DESIGNER	DATE
REVISION HISTORY				
TOLERANCE UNLESS SPECIFIED		DIMENSIONS ARE IN INCH		
1/4 per IT1 - 50mm per mm		THIRD ANGLE PROJECTION		
DESIGN	JCombest	KAYDON CUSTOM FILTRATION CORP.		
DATE	7/15/2008	1571 LUKKEN INDUSTRIAL DRIVE WEST		
APPROVED		LAGRANGE, GA. 30240		
DRAWING		K2-1 & K5-1 Assemblies		
REV	ET153	REV	SDP21077	B
DATE	2-4-08	SHEET	1	1

© COPYRIGHT 2008 KAYDON CUSTOM FILTRATION CORPORATION
 PROPRIETARY AND CONFIDENTIAL INFORMATION. This document contains
 information that is the property of Kaydon Custom Filtration Corp. and
 may not be copied, used, or disclosed to others, EXCEPT with the written permission
 of Kaydon Custom Filtration Corp. This document and information herein is subject to
 change without notice. Kaydon Custom Filtration Corp. reserves the right to modify
 specifications, drawings, and information herein without notice.
 Kaydon Filtration denies any claims of warranty or suitability of use.